



## 2023 LBC Election Results

---



The Election of Officers for the 2023 Executive Committee for the Louisville Bicycle Club was held at the Annual Membership Banquet as per our By-Laws

The results via unanimous approval were:

Secretary: **Clinton Philips**  
Treasurer: **Phil Mattingly**  
V.P Advocacy: **Scott Harrington**  
V.P Communications: **Steven Jent**  
V.P Education: **David Wittry**  
V.P IT: **Erik Helton**  
V.P Touring: **Steven Sarson**

The following positions remain open:

President: OPEN  
V.P Racing: OPEN

Please note that outgoing president **Jeff White** will continue to serve on the executive committee as acting president until such time as the position is filled.

**Congratulations to the winners!**



Louisville  
*Bicycle Club*





## 2023 LBC Sponsors



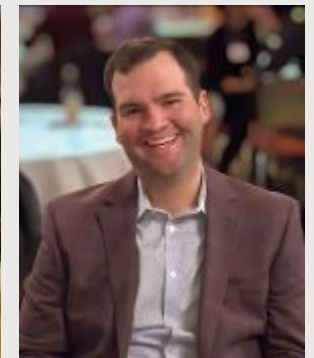




## 2023 LBC Annual Banquet

The Louisville Bicycle Club Awards Banquet and club officer elections were back in action this weekend for the first time since the pandemic! And it was an amazing event! We filled up the Knights of Columbus with LBC members, had delicious food, and celebrated our volunteers and riders who stood out in 2022. A big thank you to everyone who made it happen! Margaret and I had a great time, and as my contribution, here are ...some of... the evening's photos!

—Dr. Larry Preble







## 2023 LBC Annual Banquet - All Photos courtesy of: Dr. Larry Preble





## 2023 LBC Annual Banquet - Award Winners!

### Club Awards

*President: Jeff White*

#### Awards - Volunteer:

Tommy Sutton	Support and Gear (SAG)
Andy Murphy	Tour de Lou
Bekki Livingston	Volunteer of the Year

#### Honorable Mention - Volunteer:

Barbara Tretter	Pegasus Pin Sales
Donna Connell	Merchandise Director
Samuel Bland	Merchandise Director
Phil Samuel	Statistician
Erik Neiman	Statistician

### Touring Awards

*VP of Touring: John Pellegrino*

#### Presentations:

Scott Harrington	Touring Ambassador
Phil Samuel	Statistician
Mike Crawford	Ride Captain of the Year
Chris Embry	Best New Ride Captain
Margaret Sutton	Best New Cyclist
Kenny Robinson	Most Improved Cyclist
John Fong	Best Destination Ride
Erik Helton	Best New Ride

#### Yellow Jersey:

Amelia Dauer  
Larry Preble

#### Blue Jersey:

Lisa Fluhr  
Mike Kaufman

#### Jersey Presentations:

Laura Trachtenberg	50,000 Miles
Percy Black	50,000 Miles
Steve Sarson	75,000 Miles
David R King	100,000 Miles
Larry Preble	150,000 Miles

### Tour de Mad Dog Awards

*Director: Bekki Livingston*

#### Champions:

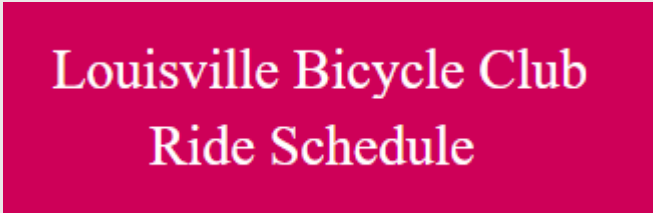
Amelia Dauer  
Larry Preble

#### Finishers:

Tom Askew  
Sam Bland  
Mike Crawford  
Bob Grable  
Melissa Hall  
Tom Hurst  
Mike Kamenish  
Dave King



Ned Putnam  
Phil Mattingly  
Steve Merideth  
Thomas Nance  
John Pellegrino  
Clint Phillips  
Steve Puckett  
Jeff White







## 2023 LBC Annual Banquet - Award Winners!

### Touring Awards (Cont.)

#### Top Ride Captains – 10 Plus Rides:

Larry Preble	170 Rides	Joe Hitselberger	20 Rides
Mike Kaufman	125 Rides	David Wittry	20 Rides
Percy Black	62 Rides	Terri Zobel	19 Rides
Barbara Martin	41 Rides	Andy Murphy	18 Rides
Jeff Carpenter	38 Rides	James Braden	17 Rides
Mike Crawford	35 Rides	Chris Embry	16 Rides
Laura Trachtenberg	32 Rides	Glenn Todd	16 Rides
John Pellegrino	28 Rides	Kathy Ragland	15 Rides
Joe Medley	27 Rides	Tom Askew	14 Rides
George Cooper	26 Rides	Steve Puckett	14 Rides
Erik Helton	24 Rides	Lee Staudter	14 Rides
Craig Dooley	23 Rides	Jeff White	14 Rides
Melissa Hall	23 Rides	Brian Borgmann	10 Rides
Steve Sarson	21 Rides	Scott Harrington	10 Rides

#### Top Ride Captains – All Others:

Erik Nieman	Mike Kamenish
Cara Sue Kraus	Alan Mccoy
Tommy Sutton	Kevin Murphy
Amelia Dauer	Tony Nall
David R King	Thomas Nance
Sonia Poirier	Valerie Pfeiffer
Mark Alford	Clint Phillips
Bekki Livingston	Margaret Preble
Bob Grable	Dave Robinson
Phil Mattingly	Phil Samuel
To Schurfranz	Bob Schindler
John Fong	Dee Schreur
Peter Fosl	Bill Stader
Perry Finley	Susan Wentzel
Chad Hughlett	



Louisville Bicycle Club  
Ride Schedule



## 2023 LBC Annual Banquet - Award Winners!

### OKHT Awards

Director: Bekki Livingston

#### Presentations:

Bekki Livingston  
Jeff White  
Diane Bellafronto  
David Wittry  
Erik Helton  
Bob Schindler

Glenn Todd  
Kelly McGill  
Thomas Nance  
Barbara Martin  
Steve Sarson



#### Special Thanks!:

Lester Adams  
Allison Apprill  
Tom Askew  
Ford Barr  
Percy Black  
Brian Borgmann  
James Braden  
Vicky Bridges  
Paul Cappiello  
Jenn Churik  
Tom Chynoweth  
George Cooper  
Amelia Dauer  
Rebecca Dimon  
Craig Dooley  
David Wittry  
Jeff Filcik  
Kim Fong  
John Fong  
Melissa Hall

Tom Hall  
Maryann Heckler  
Richard Heckler  
Ron Heuglin  
Chad Hughlett  
Steven Jent  
Mike Kaufman  
David R King  
Bob Knaster  
Ron Lauter  
Glenn Leach  
Dave Leist  
Bekki Livingston  
Phil Mattingly  
Joe Medley  
Carol Medley  
Nancy Nance  
John Pellegrino  
Valerie Pfeiffer  
Clinton Phillips

Sonia Poirer  
Larry Preble  
Margaret Preble  
Steven Puckett  
Ned Putnam  
Phil Samuel  
Rita Sarson  
Maureen Schell  
Dee Schreur  
Deb Sexton  
Steve Sexton  
Fred Shuck  
Michelle Stader  
Bill Stader  
Tommy Sutton  
Laura Trachtenberg  
Jim Tretter  
Brooke Willis  
Chris White











Dr. Larry Preble's "2022 The Best of LBC" Video





## VOLUNTEER REGISTRATION IS OPEN



If you haven't heard, June 17<sup>th</sup> is the date for our 43<sup>rd</sup> OKHT! And we need YOU!

There is truck loading, food sorting and packet pick up/registration on Friday. (Lead by Diane Bellafronto, Steve Sarson, Bob Schindler and Phil Mattingly). We will also need to mark the route with signs on Friday (we can't do it any earlier because signs get stolen/and or taken!!!). Erik Helton & Clinton Phillips lead our route marking.

Set Up and breakfast happen early Saturday morning along with registration and packet pick up. We have 4 beautiful SAG stops along the route and we need a LEAD club member at each stop. Kelly McGill is serving breakfast – sign up to help her. Rebecca Dimon needs a co-lead at Circle Bar C. Barb Martin will be at Acorn Lane. We need a team at the Hermitage Farm and hopefully our Mad Dogs will staff Chestnut Hall again. We need someone to manage lunch as riders return to the pavilion.

We will open at 6:45am Saturday with riders going out between 7:30 and 8:30 am. The course closes at 4:00pm – but that's when we clean up, load up and head to Red Cross of Oldham County to clean and sort everything before putting it back in our storage facility late Saturday or Sunday morning.

We need 2 Dead Last Riders on each course to sweep all riders back to Yew Dell. We also need drivers for our SAG vehicles. We request that you are a club member to volunteer for these positions that will be headed up by Glenn Todd.

Dave Wittry will be coordinating our parking team at Yew Dell and the off-site parking too.

If you don't see a spot that fits for you, just email me and we will put you when and where you can help.

[okht@louisvillebicycleclub.org](mailto:okht@louisvillebicycleclub.org)

Register here <https://www.louisvillebicycleclub.org/okht-volunteer>

Thank you so much for supporting the Louisville Bicycle Club. If you can't volunteer, support the club by purchasing an OKHT t-shirt or jersey=> [HERE](#) – or register for the ride!



THANK YOU!

Bekki Livingston





## Goodwill Industries of Kentucky

Many of you know that David Wittry, Steve Sarson and I run a program for Goodwill Industries of Kentucky called Last Mile to Work (LMTW). This program provides lower income people reliable transportation to work. It began because the cost of a vehicle, upkeep and insurance, prohibited people from owning a car. In 2022 LMTW;

- ◆ Refurbished 260 bikes
- ◆ Completed 89 walk in repairs
- ◆ Placed 269 people on bikes

We do not intend to compete with the local bike shops, our goal is to provide a low cost alternative, providing people with reliable transportation and helping them manage limited financial resources.

In 2022 we received bikes and parts through the Goodwill stores, Clarksville Schwinn, Louisville Police Department, TARC, Falls City Bike Works and LBC club members. In 2023 we are adding the University of Louisville. LBC members Carson Torpey, Laura Trachtenberg, Paul Cappiello and Brian Borgmann have volunteered time to build bikes. Cara Sue Kraus spends time at Gimme \$5 looking for bike parts. Mary Ann Heckler embroidered our shop aprons with the slogan "We provide the Wheels to Work". It truly takes a village to help people be successful.

The program depends on bike donations. I am asking that you place the following in your local Next Door.

### Subject:

Bikes to help people get to work

### Message:

Do you have a bike that you no longer need? Goodwill Industries of Kentucky Last Mile to Work program refurbishes bikes to help people get to work. Employees and program participants receive a bike, helmet, safety vest, lock and a light free of charge. In 2022, 269 people received bikes to help them get to work.

If you have a bike to donate you can drop it off at your local Goodwill store or the Career Center and Last Mile to Work bike shop at 909 East Broadway and say it is for the LMTW program. For more information call 502 585-5221 ext. 2271 or email [Bikes@goodwillky.org](mailto:Bikes@goodwillky.org)

Glenn Todd

Last Mile to Work Project Coordinator



Thanks in advance for your help

Rev. I Glenn Todd III M.Ed.  
Last Mile to Work Project Coordinator  
Goodwill Industries of Kentucky, Inc.  
909 East Broadway  
Louisville, KY 40218  
502 585-5221

*Goodwill Industries of Kentucky helps people with disabilities or other disadvantages achieve and maintain employment to gain a better quality of life.*



## LBC Cabbage Patch Support

We received the following letter of thanks from the President of Cabbage Patch Settlement House.

Addressed to the Louisville Bicycle Club, it is very complimentary and represents a nice "thank you" to the LBC for our efforts, exposure and donations.



1413 SOUTH SIXTH ST. LOUISVILLE, KENTUCKY 40208-2200 CABBAGEPATCH.ORG 502.634.0811

January 11, 2023

Louisville Bicycle Club  
Michael Crawford  
mrawdaddy@gmail.com

Dear Michael and Members of the Louisville Bicycle Club,

On behalf of the families, children, and staff of The Cabbage Patch, thank you for your support through the Christmas Partner Program. We hope that you and your family or organization had a wonderful Christmas, and want you to know that your generosity enabled our families to feel your love and support when they celebrated Christmas last month.

This was a challenging year for our families as food prices increased by over 10% and average rent prices increased by 8%. Budgets were very tight, and many families were wondering how they would be able to afford gifts this year. Thanks to you and other generous partners, we were able to assist **over 70 families** this Christmas. A text from a Patch Parent named Roberta\* summed up a lot of the parents' thoughts. She wrote, "It's been really hard trying to maintain everything and pay my bills this year. I'm very grateful to The Patch and the people that make the Christmas Partner Program happen."

Christmas is always a welcome reminder of God's love and care, but in these times of higher costs, it feels especially meaningful. This year, as we have welcomed in the Christ-child into our world and lives, thank you for being His hands and feet through your giving. We wish you God's continued blessings into the New Year!

Warm regards,

Rev. Dr. Calvin Holloway  
Counseling & Family Development Manager

Doug Holm  
Senior Family Support Specialist

\*Name changed for privacy

Good work LBC members!





## BikeMS Bluegrass Bourbon Ride

June 24th and 25th, 2023

Heaven Hill Distillery, Bardstown, KY

*Bike MS is the largest charity cycling series in the country.*

Team “WIL POWER-Powered by LBC” is looking to add new members to our team!

To that end, The Louisville Bicycle Club and Team “WIL POWER-Powered by LBC” are joining forces to offer \$100 matching gifts to assist qualified LBC Members in reaching their fundraising goals.

How does it work?

- 1) You must be a member in good standing of the LBC
- 2) You may not have participated in The BIKE:MS Bluegrass Bourbon Ride in the past three (3) years.
- 3) You must raise \$200 on your own. At that point you will receive a gift of \$100 which will get you the \$300 level. Which is fundraising minimum to ride. (Of course, you don't have to stop there!)
- 4) BONUS: For a limited time, use code CLIPIN to save 15% when registering!!

Just as the name implies, “WIL POWER - Powered by LBC”, is a team made up of mostly LBC Members. But, we are not exclusively LBC Members. We have several non-LBC cyclists on our roster.

This year, all rides will start and finish at Heaven Hill Distillery in Bardstown. There will be supported rides on Saturday and Sunday. Routes will range from 14 miles to 62 miles each day with the possibility of adding loops to the routes to ride as far as you wish. At Saturday's Finish Line Festivities, you will be treated to Pizza, Refreshments, Entertainment, Socializing, a Catered Sit Down Dinner, an Awards Ceremony, and FUN!..... LOTS of FUN!

Sunday's routes and Finish Line Festivities have not been announced as of this writing. But, I'm sure that there will again be lots of Miles, Food, Refreshments and, yes, MORE FUN!

Check out our TEAM PAGE to see which of your friends have already joined The Team.

<https://mssociety.donordrive.com/index.cfm?fuseaction=donordrive.team&teamID=30571>

For more information on Team “WIL POWER - Powered by LBC”, you may contact:

MaryAnn Heckler, Team Captain, (502)931-2066 [Heckler@bellsouth.net](mailto:Heckler@bellsouth.net)

Or, Richard Heckler, (502)931-2067 [Heckler@bellsouth.net](mailto:Heckler@bellsouth.net)

Additional information and registration at:

<https://mssociety.donordrive.com/index.cfm?fuseaction=donordrive.team&teamID=30571>

*Thanks,*

MaryAnn and Richard





## 2023 Tour De Mad Dog Schedule

DATE	ROUTE	RIDE CAPTAIN
Saturday, January 21, 2023	SMBC Moderate-Century aka "Blame it on Phil"	Clinton-Phillips
Saturday, January 28, 2023	Hibernia-100	Thomas Nance
Saturday, February 11, 2023	Honest Abe	Phil Mattingly
Saturday, February 25, 2023	Puddle's Maple Syrup Century	Thomas Nance
Saturday, March 4, 2023	TBD	Dee Schreur
Sunday, March 19, 2023	TBD	Steve Puckett
Saturday, April 22, 2023	Surburban	John Pellegrino
Saturday, April 29, 2023	Crawdaddy's Atypical (Beaucoup Facile) Tour de Kentuckiana	Michael Crawford
Sunday, May 7, 2023	Story	Melissa Hall
Saturday, May 20, 2023	The Harrison	Bob Grable
Saturday, June 3, 2023	Muscatatucky Century	Michael Kamenish
Saturday, June 10, 2023	Crestwood Killer	Fritz Kopatz
Saturday, July 8, 2023	Adjective Ride	Sam Bland
Saturday, July 15, 2023	A Good Second Century	Andy Murphy
Saturday, August 5, 2023	Wises Landing Century	Larry Preble
Saturday, August 19, 2023	Two Bridges Century	Larry Preble
Saturday, September 16, 2023	BMB	Tom Askew
Saturday, September 23, 2023	Twice Boston Century	John Fong
Saturday, October 7, 2023	Wheels of Screams	Thomas Nance
Saturday, October 14, 2023	Medora Goes Pink	Melissa Hall

◆ For current Tour De Mad Dog News and schedules visit =>

<https://louisvillebicycleclub.org/tmd-schedule>

## 2023 Tour De Mad Dog Sponsors







## More donation opportunities with Catholic Charities of Louisville

Dear Louisville Bicycle Club,

My name is Lay-Plah Cho, and I am the Community Engagement Specialist for Catholic Charities of Louisville. I hope this email reaches you and your team well. I'm reaching out today to ask for help from the Louisville Bicycle Club.

Catholic Charities is a nonprofit organization and one of three refugee resettlements here in Louisville, Kentucky. We have been welcoming refugees and asylum seekers for a very long time, and we would like you to be part of the change.

Many refugees start a new life here and the majority do not have access to personal transportation. Yes, they do have access to public transportation such as the Tarc bus to attend medical appointments and work; at the same time, they do not need to use the public transportation for running errands such as Grocery stores, postal offices, and attending community centers. These types of places where it is not far enough for a Tarc bus but close enough for walking distance makes life a little bit more difficult. During the winter, it is difficult for newly arrived refugees to get around and having personal transportation such as a bike will be a big help. Owning a bike will be one of the best ways they can become self-sufficient and that is the goal for us. They now can make errands at their own will at the same time, learning to adjust to their environment.

As shown from the Louisville Bicycle Club website, I know that LBC is strongly involved in its community through the Cabbage Patch Settlement House program. We would love to hear more about this program and the relationship you've built with CPSH.

If Louisville Bicycle Club has any spare working bikes that they like to donate or know anyone that will love to donate, please feel free to reach out.

We would love to hear from you.

Best,

**Lay-Plah Cho**

*Community Engagement Specialist*

Catholic Charities of Louisville

2220 W Market St - Louisville, KY 40212

[www.cclou.org](http://www.cclou.org) – [lc@archlou.org](mailto:lc@archlou.org)

502.6762.533 (W) • 502-999-6608 (C)







## Pictures and Videos from recent Rides

At the Moderate Urban Street 35 miler hosted by Captain Steve Sarson , Club President Jeff White presented two awards: Kenny Robinson for Most Improved Rider and Kelly McGill for her volunteer work at OKHT. Congratulations to Kenny and Kelly!







## Pictures and Videos from recent Rides

TMD Stage 2: Hibernia Century. A Big group showed up for this January TMD. The temperature was better than the week before but we had to battle the wind! All the Mad Doggers did great even if they were beat up pretty good for the last 50 miles. Ride On!







## NOT A MEMBER YET?

Join the Louisville Bicycle Club and the hundreds of members for one of our daily rides. The Louisville Bicycle Club has rides for all levels and distances. Not a member yet?

### Did you Know...

...that LBC has a robust and active Strava Club?



Join the community at:

[www.strava.com/clubs/louisville-bicycle-club](http://www.strava.com/clubs/louisville-bicycle-club)

### Did you also Know...

...that LBC has a club Ride with GPS Account?



We'd like to remind all of our cycling friends in Louisville, that it's important to report issues w/ our bike lanes and paths to Metro311. Just call 311 during the week, 7 a.m. - 7 p.m. They now have a full-time sweeping contract and the time from call to completion is shorter than ever.  
- Ride safe! Thanks!!



### Join the LBC's Club Bike to Beat Cancer Team

2023 Bike to Beat Cancer is Saturday, Sept. 9th.



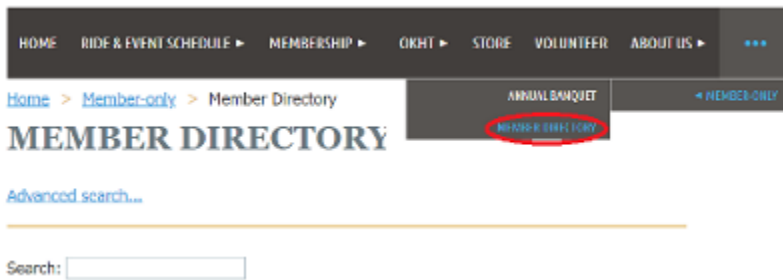
## !!! Contributors Needed !!!

Do you fancy yourself a journalist? Do you have a Cycling interest, event or opinion you wish to share?

The LBC newsletter committee is always in search of quality article submissions and content.

To contribute contact:

[communications@louisvillebicycleclub.org](mailto:communications@louisvillebicycleclub.org)



Louisville's bike share program is up and running! Read about it at [louvelo.com](http://louvelo.com)



## VeloInk Custom Bike Decals

Custom Name Decals with LBC Logo for your Bicycle or Helmet

[Click here to order](#)







Join our fast growing LBC Facebook Group:

<https://www.facebook.com/groups/louisvillebicycleclub>

## Louisville Bicycle Club Cycling Group

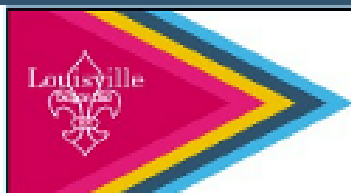


Mark your calendars!  
Louisville Bicycle Club's  
43rd Annual

**June 17, 2023**

**Registration is OPEN!**

<https://www.louisvillebicycleclub.org/event-4856381>



**20% Off Road ID**

ROAD ID and Louisville Bicycle Club Have Partnered to Benefit You!

